

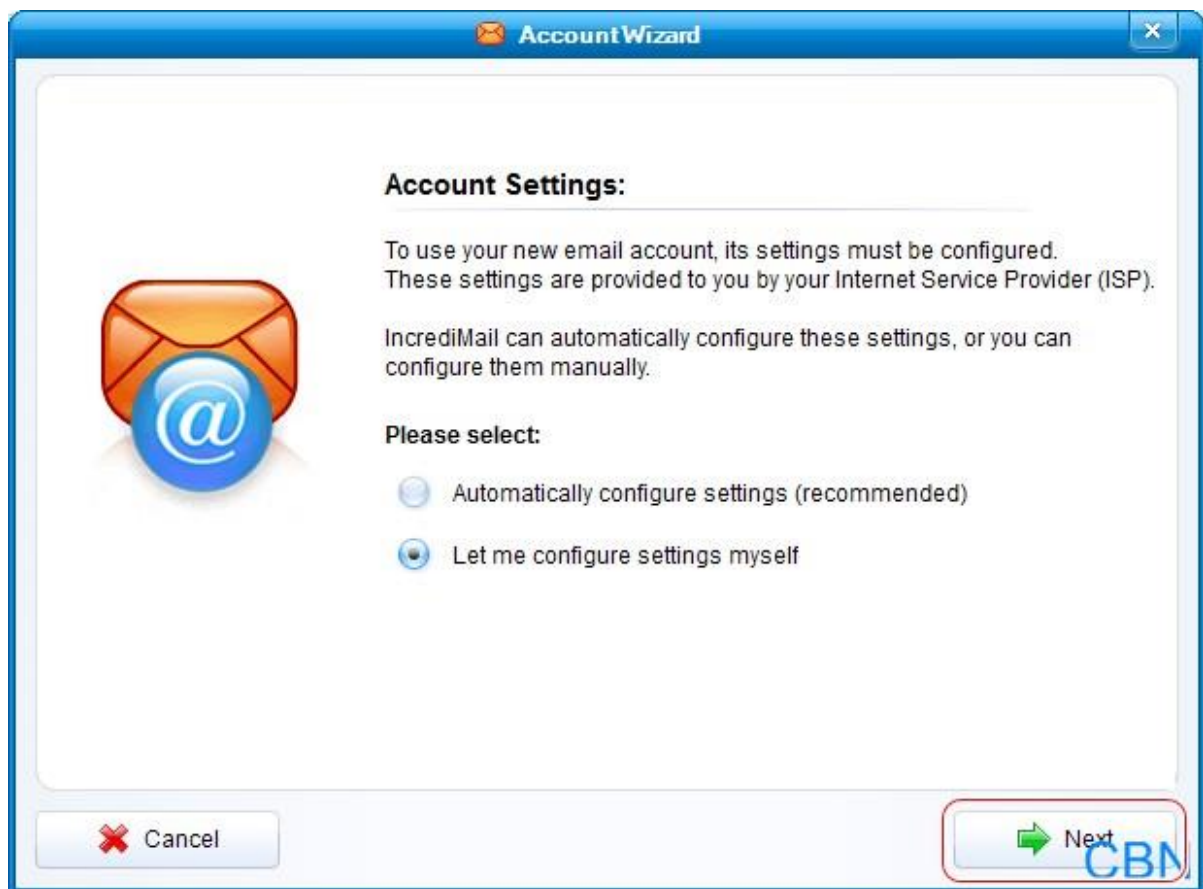
## Panduan pengaturan email CBN untuk IncrediMail

### *CBN email setup guide for IncrediMail*

***This guideline has been tested using IncrediMail 2.0***

1. Klik **Tools – Email Accounts – Add** dan pilih **Let me configure settings myself – Next**.

*Click **Tools – Email Accounts – Add** and choose **Let me configure settings myself – Next**.*



2. Pilih **Other**.

Choose **Other**.

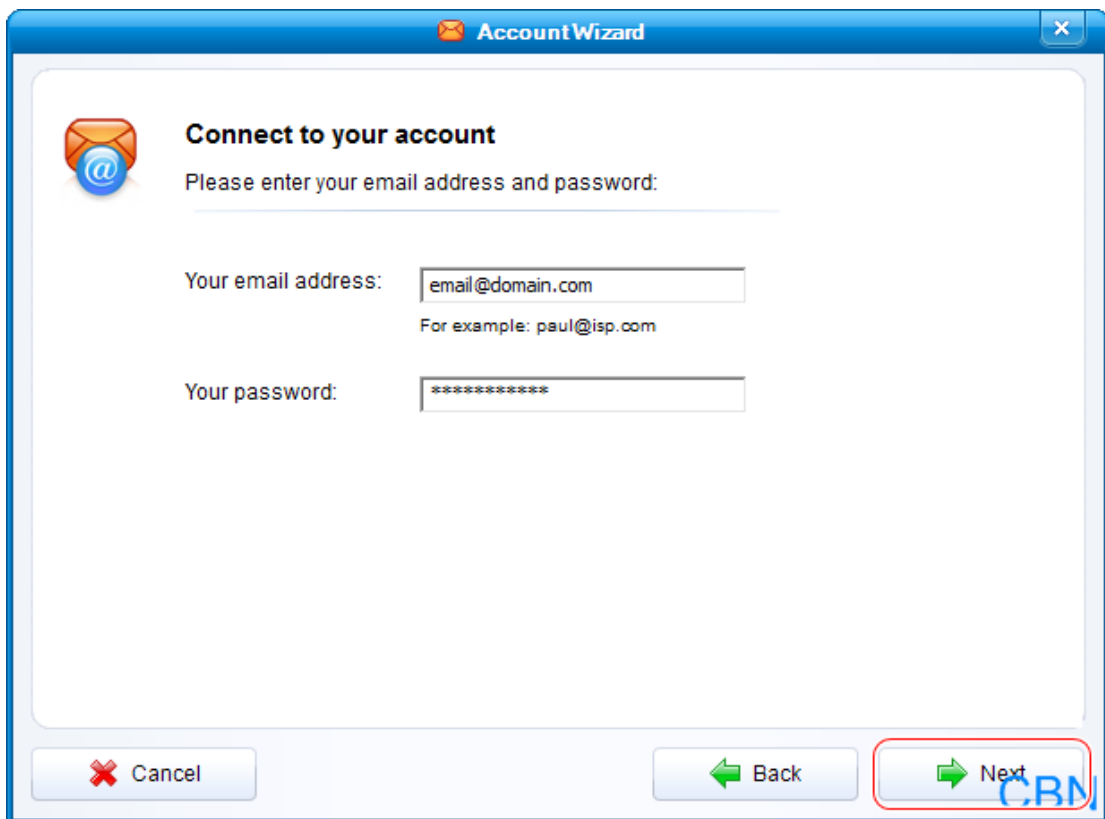


3. Masukkan informasi dibawah ini, kemudian klik **Next**.

*Fill in the information below, then click **Next**.*

**Your email address : your email address**

**Your password : your email password**



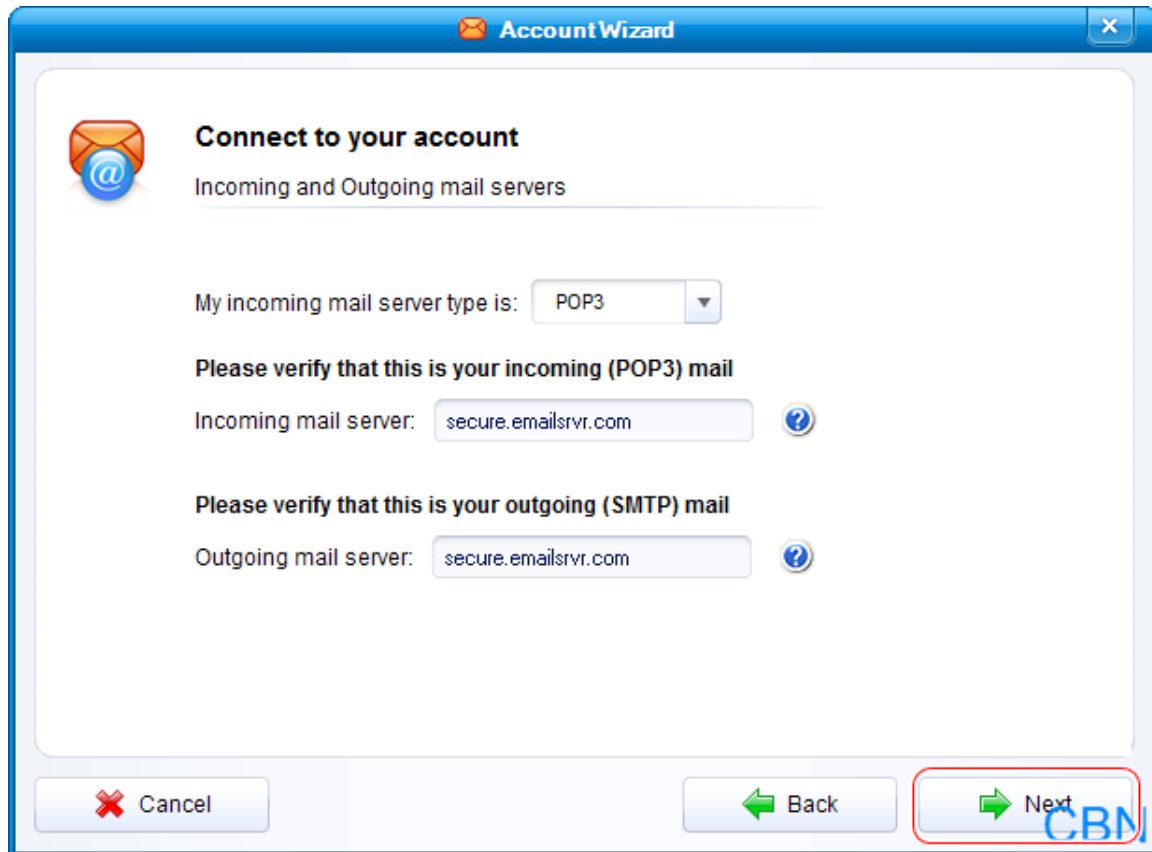
4. Masukkan informasi dibawah ini, kemudian klik **Next**.

*Fill in the information below, then click **Next**.*

**My incoming mail server type is : POP3**

**Incoming mail server : secure.emailsrvr.com**

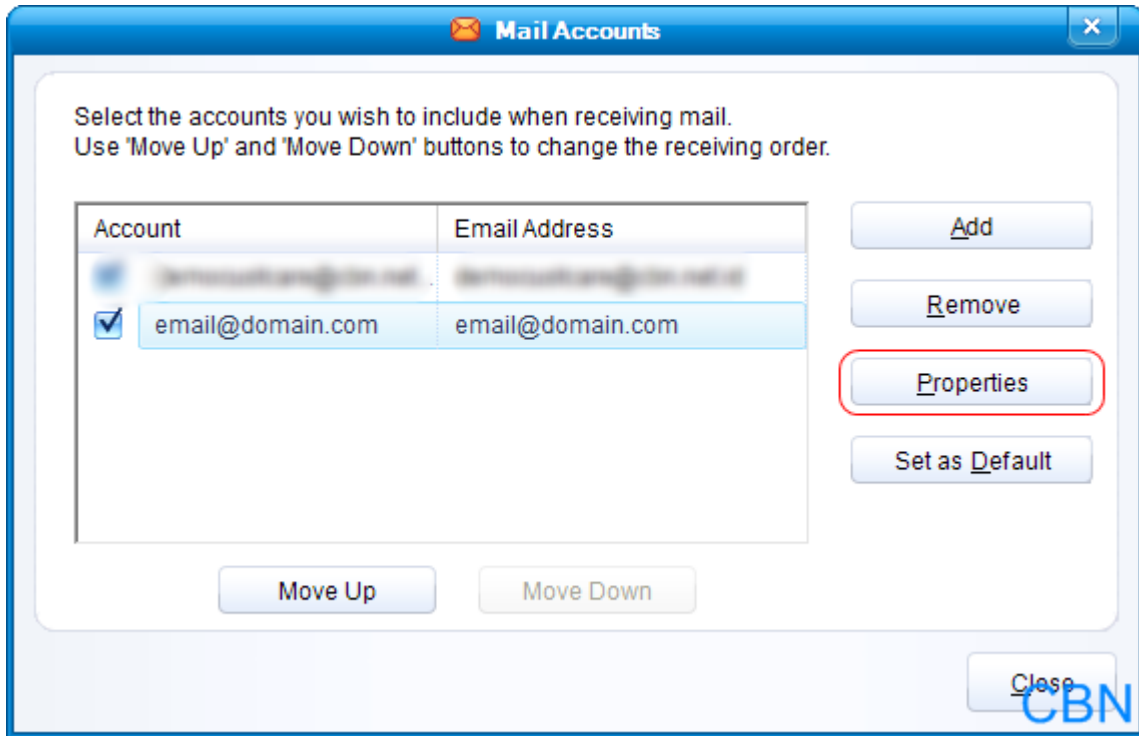
**Outgoing mail server : secure.emailsrvr.com**



The screenshot shows a window titled "Account Wizard" with a close button in the top right corner. The main content area is titled "Connect to your account" and "Incoming and Outgoing mail servers". It features a dropdown menu for "My incoming mail server type is:" set to "POP3". Below this, there are two sections: "Please verify that this is your incoming (POP3) mail" with an input field for "Incoming mail server:" containing "secure.emailsrvr.com", and "Please verify that this is your outgoing (SMTP) mail" with an input field for "Outgoing mail server:" also containing "secure.emailsrvr.com". At the bottom, there are three buttons: "Cancel" (with a red X icon), "Back" (with a green left arrow icon), and "Next" (with a green right arrow icon). The "Next" button is highlighted with a red rectangular box. A "CBN" watermark is visible in the bottom right corner of the window.

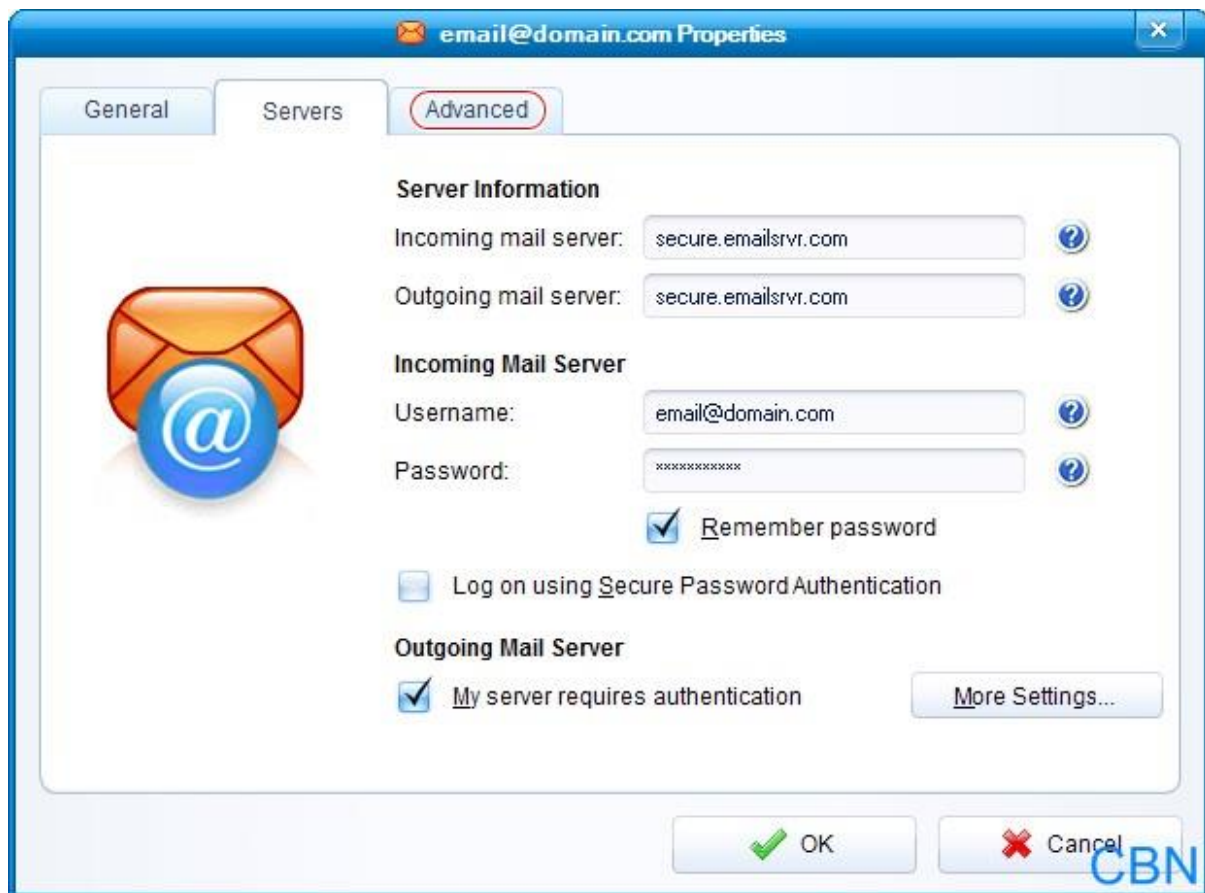
5. Klik **OK** dan ketika kembali ke tab **Mail Accounts**, pilih email yang telah dibuat dan klik **Properties**.

*Click **OK** and when returned to **Mail Accounts** tab, choose email already created and click **Properties**.*



- Pilih tab **Servers** dan cek kotak pilihan **My server requires authentication**, kemudian klik tab **Advanced**.

*Choose **Servers** tab and check the option **My server requires authentication**, then click **Advanced** tab.*



7. Masukkan informasi dibawah ini, kemudian klik **OK**.

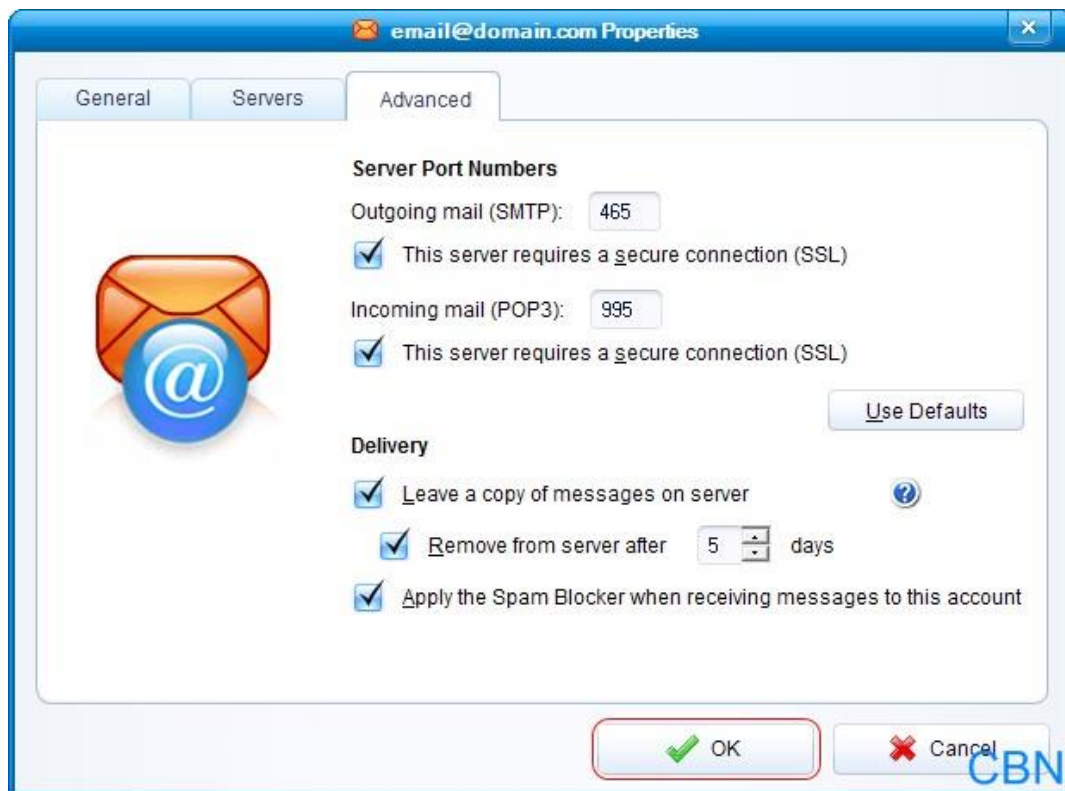
*Fill in the information below, then click **OK**.*

**Outgoing mail (SMTP) : 465**

**Checklist *This server requires a secure connection (SSL)***

**Incoming mail (POP3) : 995**

**Checklist *This server requires a secure connection (SSL)***





Opsi tambahan :

Jika Anda mengakses email ini dari beberapa perangkat secara bersamaan, disarankan untuk memilih opsi ***Leave a copy of messages on server***.

Serta untuk menghindari penuhnya mailbox, disarankan untuk memilih opsi ***Remove from server after [ ] day(s)***. Pengisian hari dapat disesuaikan dengan rutinitas email Anda.

*Optional :*

*If you access this email with several devices at the same time, it is recommended to check the option ***Leave a copy of messages on server***.*

*And to avoid full mailbox, it is recommended to check the option ***Remove from server after [ ] day(s)***. The number of days can be adjusted to your email routines.*

**cyberindo** aditama

- 📍 Cyber 2 Tower 33rd Floor, Jl. HR Rasuna Said X5 No. 13, Jakarta Selatan 12950
- ☎ (62-21) 2996 4900 🌐 [www.cbn.id](http://www.cbn.id)
- 📍 Jakarta | Tangerang | Bogor | Bandung | Bali | Medan | Palembang | Surabaya

