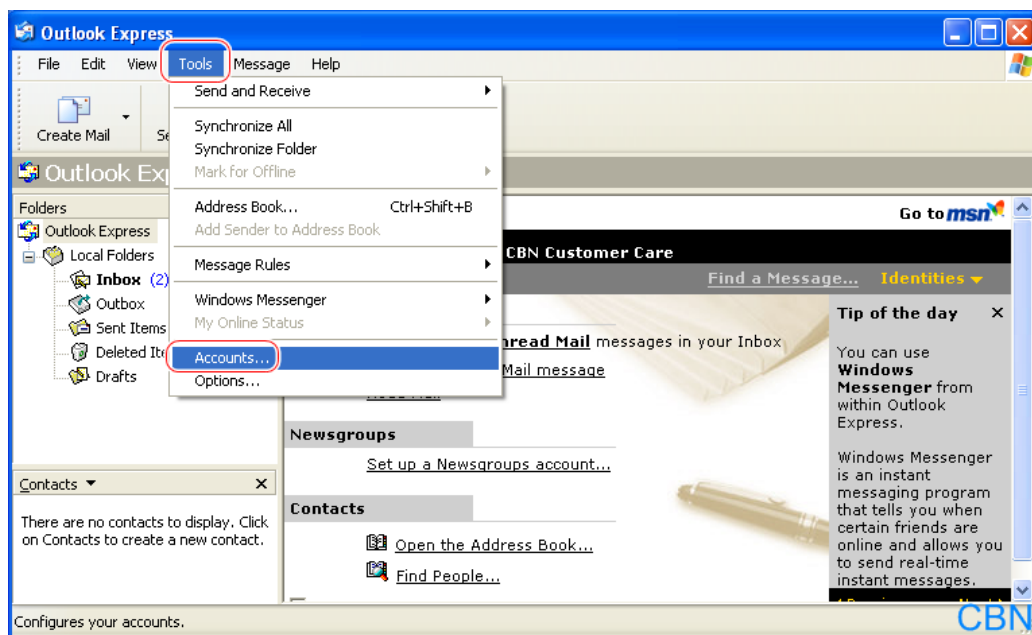


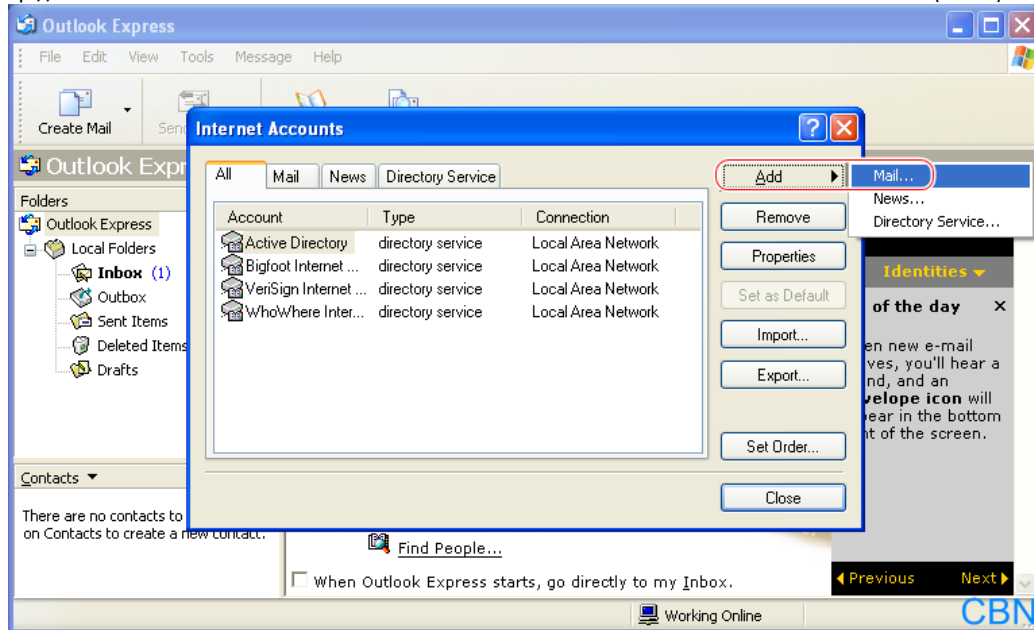
Panduan pengaturan email CBN untuk Outlook Express

CBN email setup guideline for Outlook Express

1. **Klik Tools – Accounts – Add – Mail.**

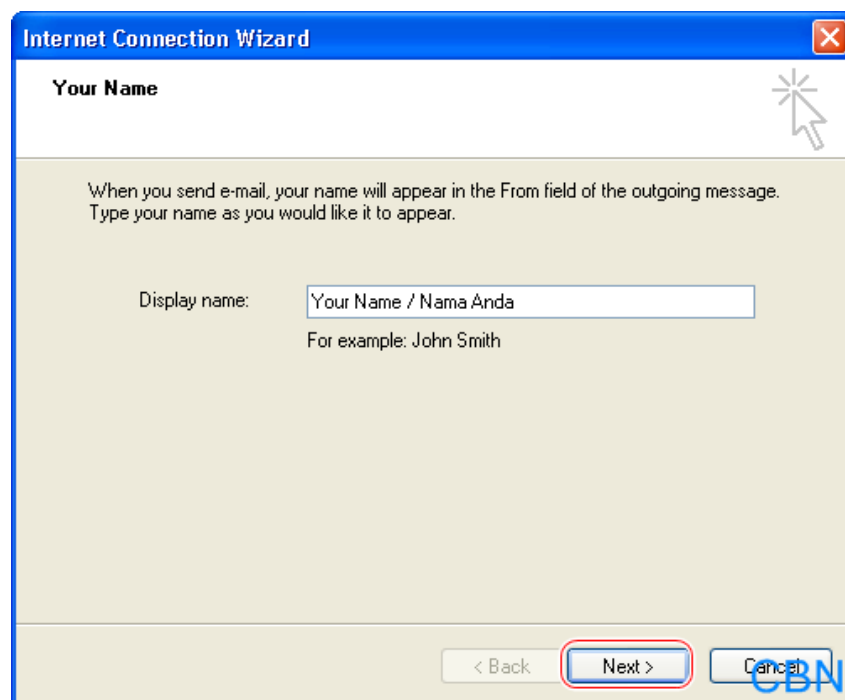
Click Tools – Accounts – Add – Mail.





2. Masukkan nama yang ingin ditampilkan pada **Display name**, kemudian klik **Next**.

*Fill in the name you want to display in the **Display name**, then click **Next**.*



3. Masukkan alamat email pada **E-mail address**, kemudian klik **Next**.

*Fill in the email address in **E-mail address**, then click **Next**.*



Web : <http://www.cbn.net.id>

PT. Cyberindo Aditama

Cyber 2 Tower, 33rd Floor
Jl. HR Rasuna Said Blok X5 No. 13
Jakarta Selatan 12950

Phone : (62-21) 299 64 900, (62-21) 5799 4500

Fax : (62-21) 574 2481

The screenshot shows a Windows dialog box titled "Internet Connection Wizard" with a sub-header "Internet E-mail Address". The main text reads: "Your e-mail address is the address other people use to send e-mail messages to you." Below this is a text input field containing "email@domain.com" and an example: "For example: someone@microsoft.com". At the bottom, there are three buttons: "< Back", "Next >" (highlighted with a red circle), and "Cancel". A mouse cursor is pointing at the "Next >" button. A "CBN" watermark is visible in the bottom right corner of the dialog box.

CBN Customer Care 24 Hours

Email : support@cbn.net.id

1500 780



Web : <http://www.cbn.net.id>

PT. Cyberindo Aditama

Cyber 2 Tower, 33rd Floor
Jl. HR Rasuna Said Blok X5 No. 13
Jakarta Selatan 12950

Phone : (62-21) 299 64 900, (62-21) 5799 4500

Fax : (62-21) 574 2481

4. Masukkan informasi dibawah ini, kemudian klik **Next**.

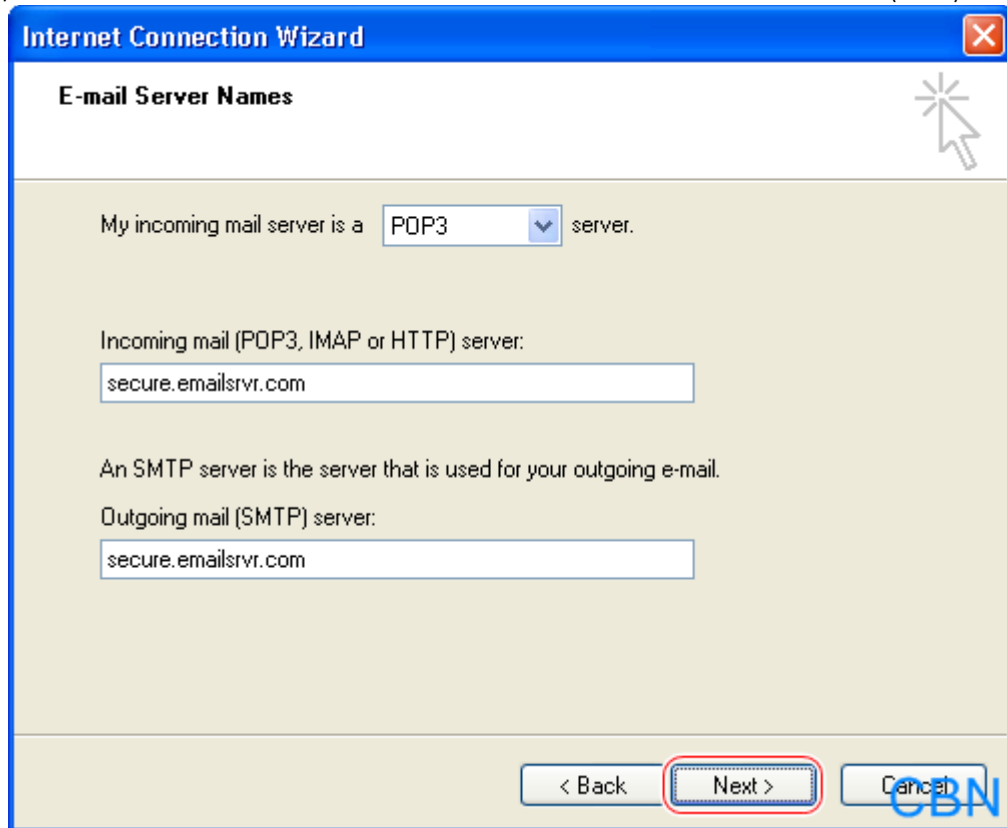
*Fill in the information below, then click **Next**.*

My incoming mail server is a POP3 server

Incoming mail (POP3, IMAP or HTTP) server : secure.emailsrvr.com

Outgoing mail (SMTP) server : secure.emailsrvr.com





The screenshot shows a Windows dialog box titled "Internet Connection Wizard" with a sub-header "E-mail Server Names". The dialog is set to "POP3" for the incoming mail server. The incoming mail server address is "secure.emailsrvr.com". The outgoing mail (SMTP) server address is also "secure.emailsrvr.com". The "Next >" button is highlighted with a red rectangle. A mouse cursor is visible in the top right corner. The CBN logo is present in the bottom right corner of the dialog box.

Internet Connection Wizard

E-mail Server Names

My incoming mail server is a server.

Incoming mail (POP3, IMAP or HTTP) server:

An SMTP server is the server that is used for your outgoing e-mail.

Outgoing mail (SMTP) server:

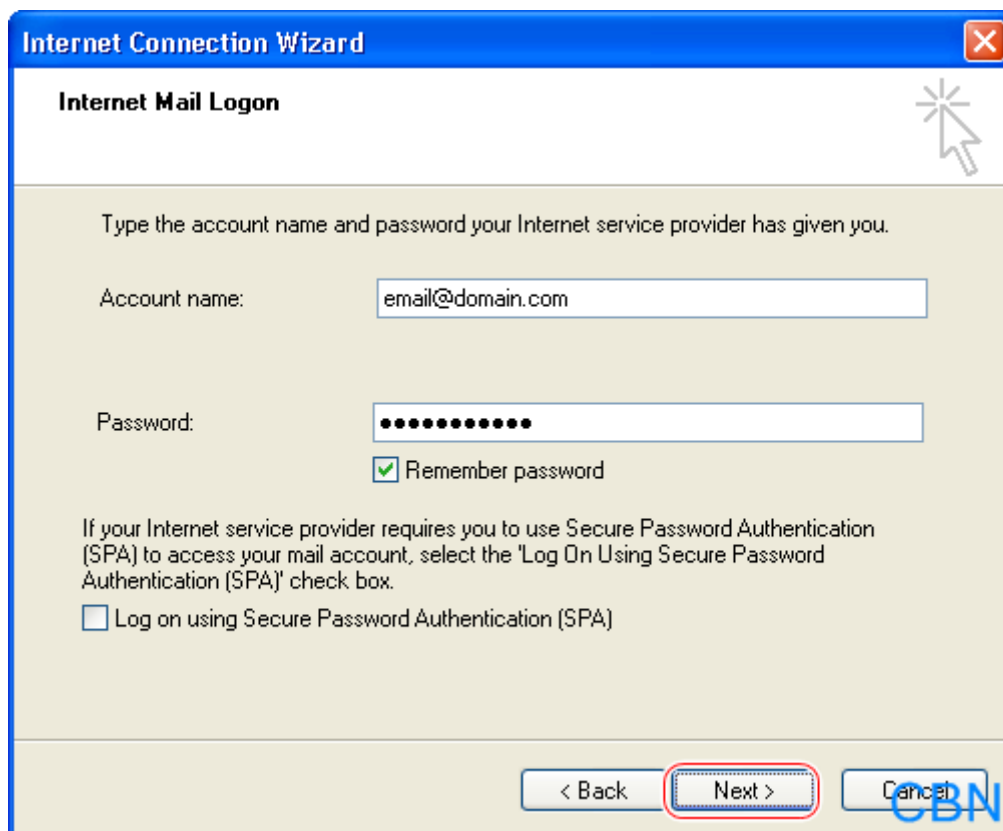
< Back **Next >** Cancel

5. Masukkan informasi dibawah ini, kemudian klik **Next** dan **Finish**.

*Fill in the information below, then click **Next** and **Finish**.*

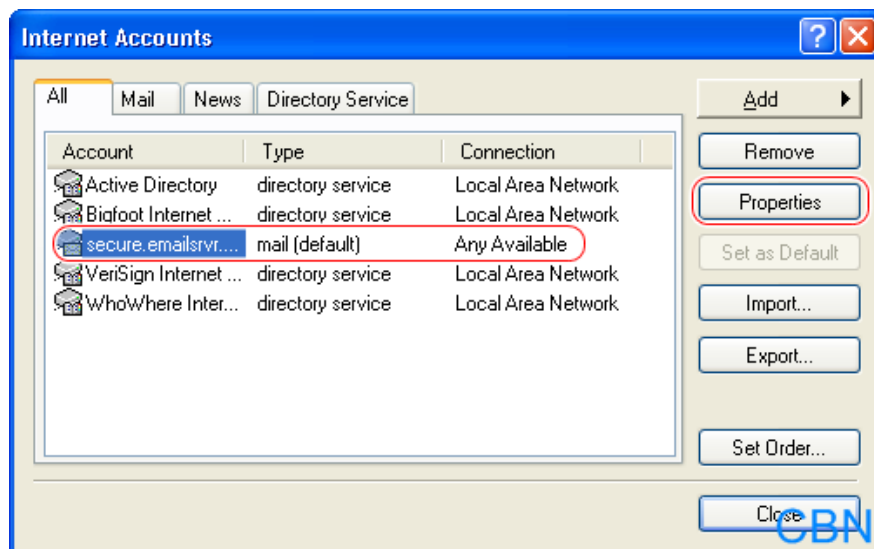
Account name : your email address

Password : your email password



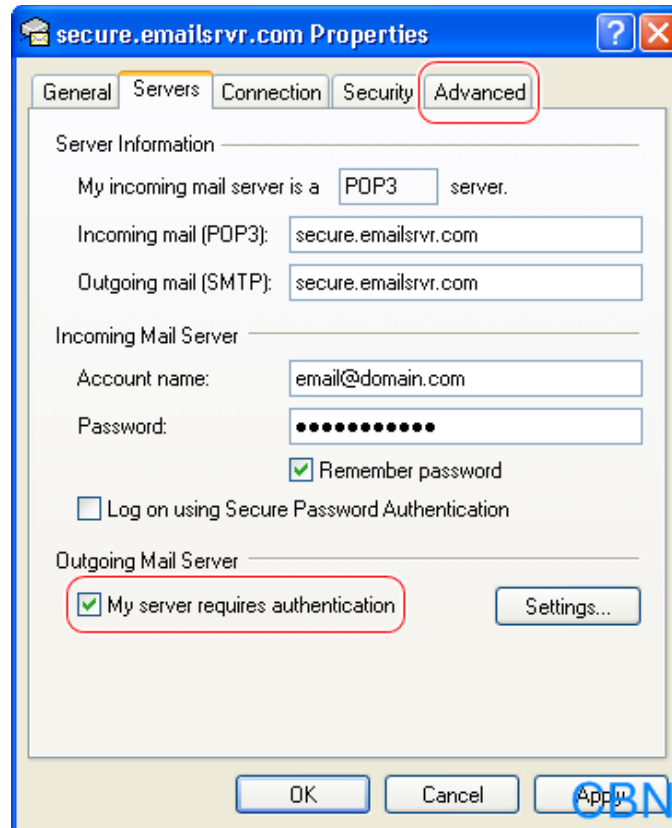
6. Pada tab **Internet Accounts**, pilih email yang telah dibuat sebelumnya, kemudian klik **Properties**.

*On the **Internet Accounts** tab, choose the email that was created earlier and then click **Properties**.*



7. Klik tab **Servers** dan cek kotak pilihan **My server requires authentication**.

*Click **Servers** tab and check the option **My server requires authentication**.*



8. Klik tab **Advanced** dan masukkan informasi di bawah ini, kemudian klik **OK** dan **Close**.

*Click **Advanced** tab and fill with information below, then click **OK** and **Close**.*

Outgoing mail (SMTP) : 465

*Check the option **This server requires a secure connection (SSL)***

Incoming mail (POP3) : 995

*Check the option **This server requires a secure connection (SSL)***

Opsi tambahan :

Jika Anda mengakses email ini dari beberapa perangkat secara bersamaan, disarankan untuk memilih opsi **Leave a copy of messages on server**.

Serta untuk menghindari penuhnya mailbox, disarankan untuk memilih opsi **Remove from server after [] day(s)**. Pengisian hari dapat disesuaikan dengan rutinitas email Anda.

Optional :

*If you access this email with several devices at the same time, it is recommended to check the option **Leave a copy of messages on server**.*

And to avoid full mailbox, it is recommended to check the option **Remove from server after [] day(s)**. The number of days can be adjusted to your email routines.

