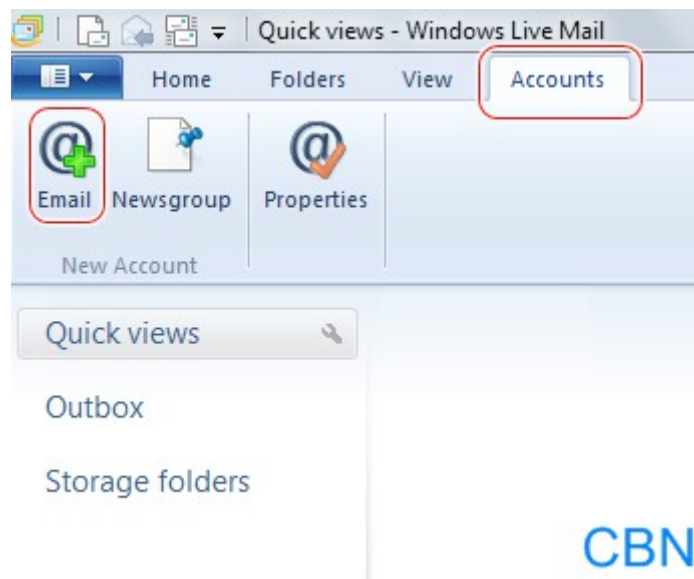


Panduan pengaturan email CBN untuk Windows Live Mail

CBN email setup guide for Windows Live Mail

1. Klik **Accounts – Email**.

Click Accounts – Email.





Web : <http://www.cbn.net.id>

PT. Cyberindo Aditama

Cyber 2 Tower, 33rd Floor
Jl. HR Rasuna Said Blok X5 No. 13
Jakarta Selatan 12950

Phone : (62-21) 299 64 900, (62-21) 5799 4500

Fax : (62-21) 574 2481

2. Masukkan informasi dibawah ini, kemudian klik **Next**.

*Fill in the information below, then click **Next**.*

E-mail Address : your email address

Password : your email password

Incoming mail server : *secure.emailsrvr.com*

Your Name : your display name

check the option **Manually configure server settings**





Web : <http://www.cbn.net.id>

PT. Cyberindo Aditama

Cyber 2 Tower, 33rd Floor
Jl. HR Rasuna Said Blok X5 No. 13
Jakarta Selatan 12950

Phone : (62-21) 299 64 900, (62-21) 5799 4500

Fax : (62-21) 574 2481

3. Masukkan informasi dibawah ini, kemudian klik **Next** dan **Finish**.

*Fill in the information below, then click **Next** and **Finish**.*

Incoming server information

Server Type : POP3

Server address : secure.emailsrvr.com / 995

*check the option **Requires a secure connection (SSL)***

Authentication using : Clear text

Logon user name : your email address

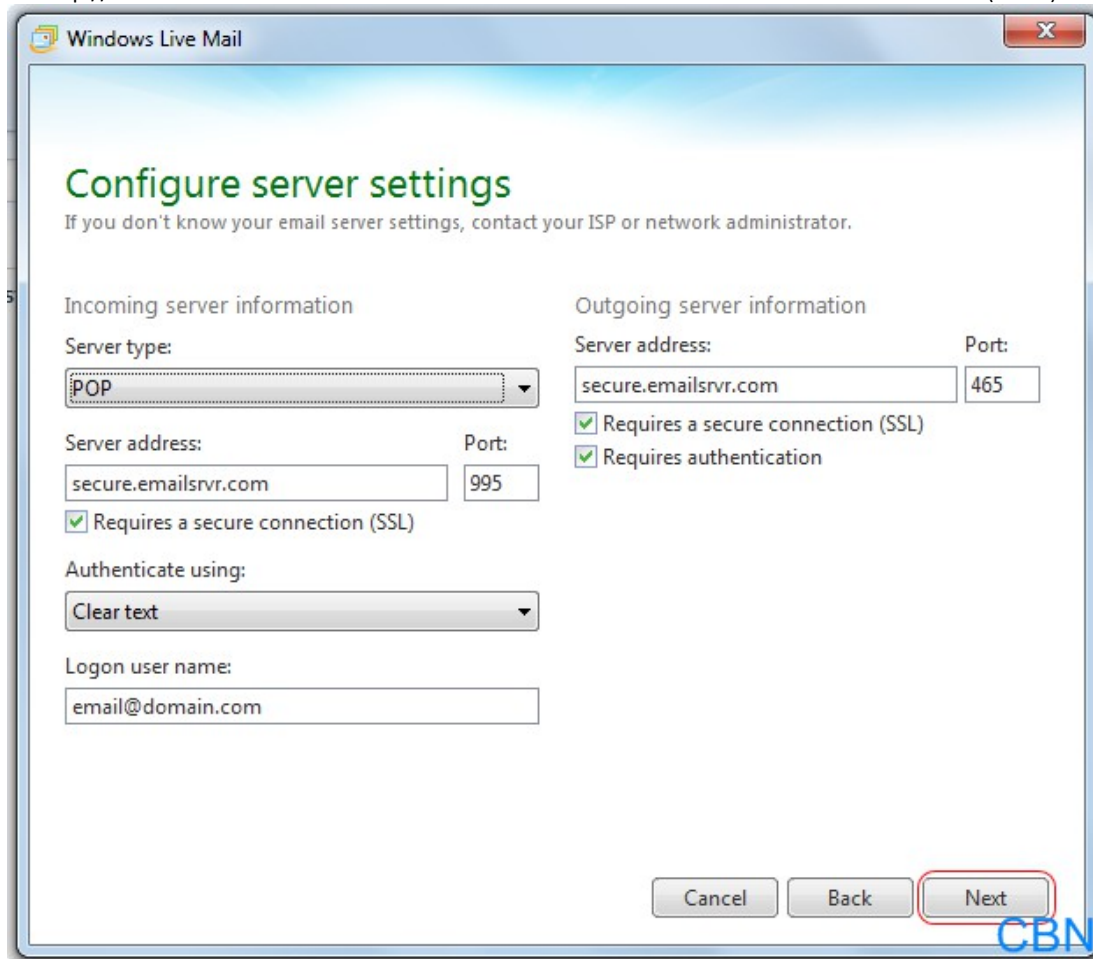
Outgoing server information

Server address : secure.emailsrvr.com / 465

*check the option **Requires a secure connection (SSL)***

*check the option **Requires authentication***



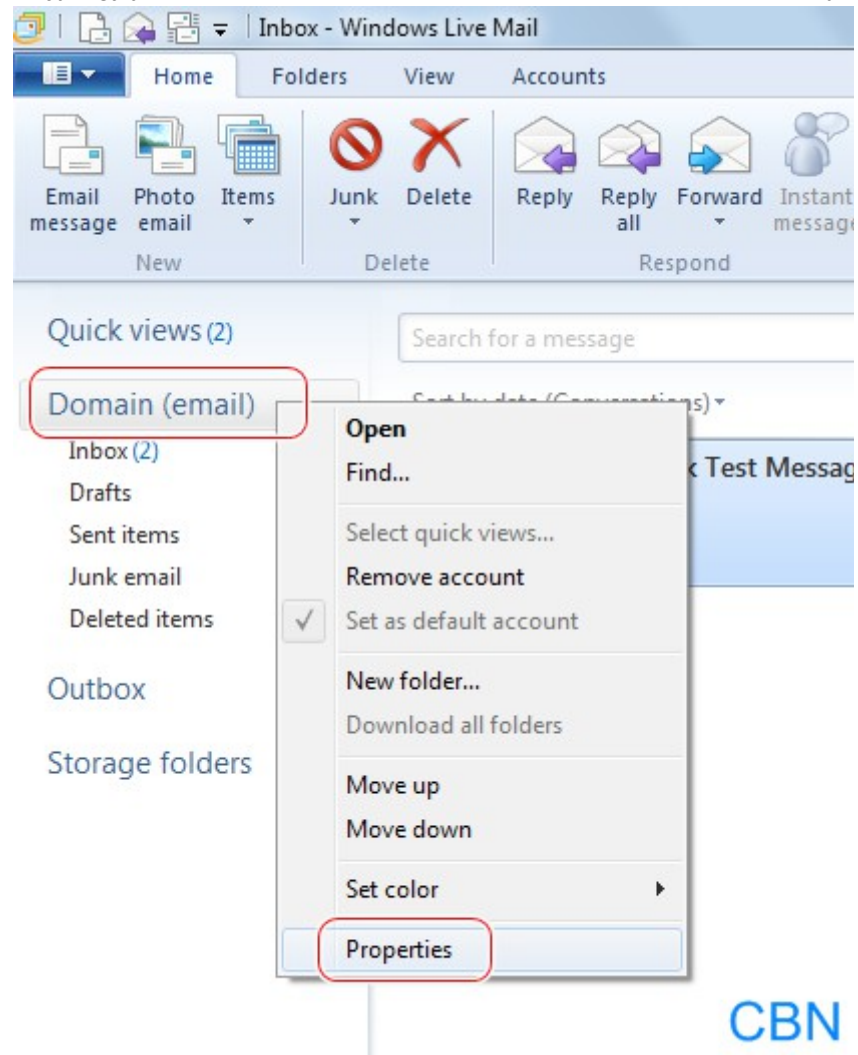


Panduan merubah konfigurasi default untuk metode penarikan email.

How to change the default configuration for email receive method.

1. Di menu **Home**, klik kanan email yang telah dibuat kemudian pilih **Properties**.

*In **Home** menu, right click the email that has been created, then choose **Properties**.*



2. Masukkan informasi dibawah ini, kemudian klik **OK**.

*Fill in the information below then click **OK**.*

Opsi tambahan :

Jika Anda mengakses email ini dari beberapa perangkat secara bersamaan, disarankan untuk memilih opsi **Leave a copy of messages on server**.

Serta untuk menghindari penuhnya mailbox, disarankan untuk memilih opsi **Remove from server after [] day(s)**. Pengisian hari dapat disesuaikan dengan rutinitas email Anda.

Optional :

*If you access this email with several devices at the same time, it is recommended to check the option **Leave a copy of messages on server**.*

*And to avoid full mailbox, it is recommended to check the option **Remove from server after [] day(s)**. The number of days can be adjusted to your email routines.*

